

# Alison Matthews

---

Special Educational Needs  
Coordinator



# Special Educational Needs and Support

---

**Please speak to me if:**

---

You received learning support in your previous school.

---

Had a ONE Plan or Individual learning plan.

---

Have a diagnosed learning need.

---

Used a laptop for your GCSE examinations.

A close-up photograph of a hand holding a blue pencil, poised to write on a document. The document has a grid of small circular patterns, possibly a form or a test paper. The background is blurred, showing a person's hands and a white object. A large orange bar is at the bottom of the image.

# Exam Access arrangements

# Types of arrangements...

EXTRA TIME

READER

SCRIBE

SUPERVISED REST BREAKS

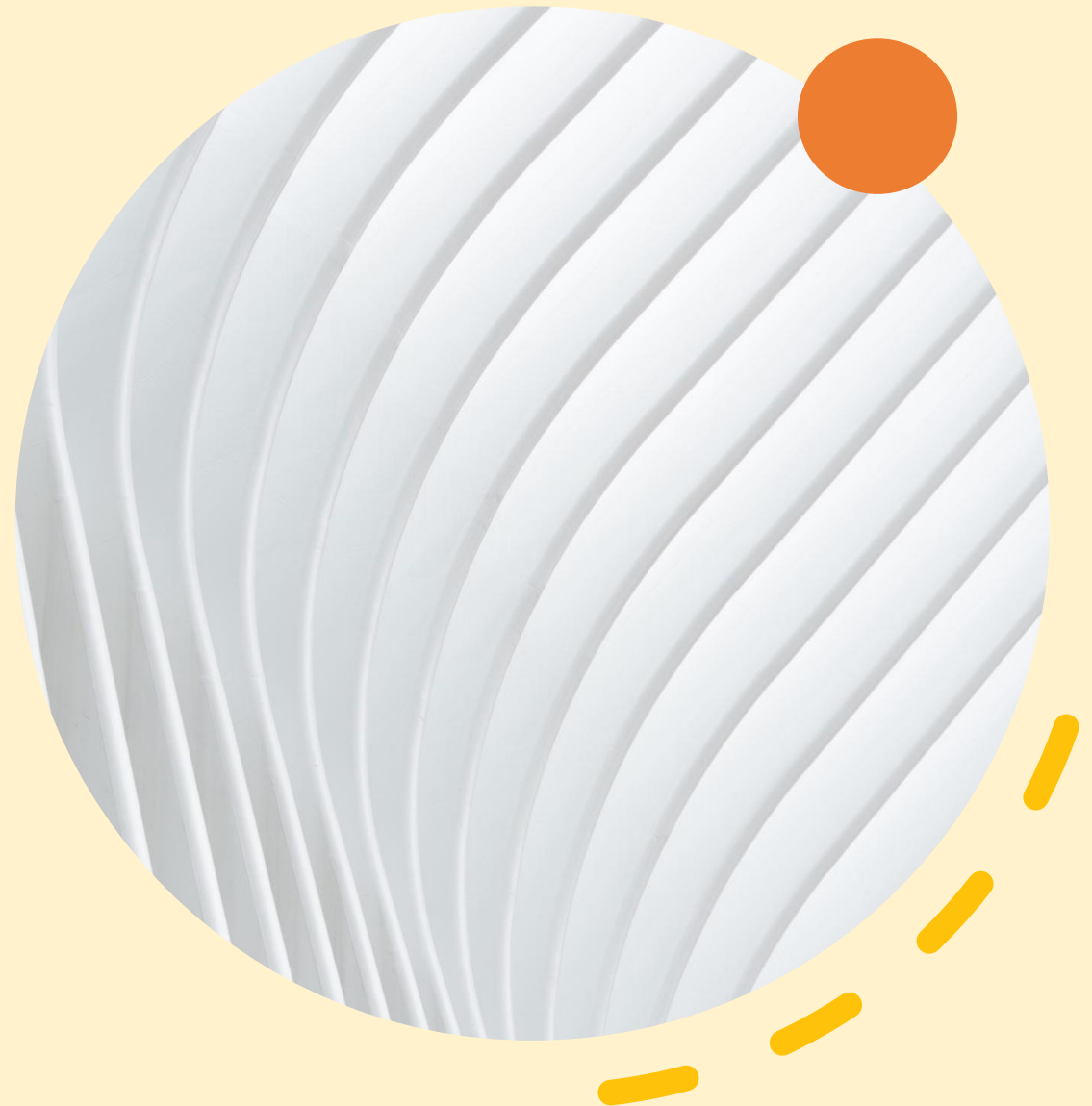
PROMPT

CONCENTRATION AID

NOISE CANCELLING HEADPHONES

SEPARATE ACCOMMODATION

LAPTOP



If you had exam access arrangements for your GCSEs, you **MUST** contact the examinations office at your previous school to request evidence...

---

**Evidence can be one of the following:**

---

**Form 8** (preferably with assessment evidence attached).

---

**SENCo file note** with accompanying teacher or medical evidence.

# Evidence: Medical need

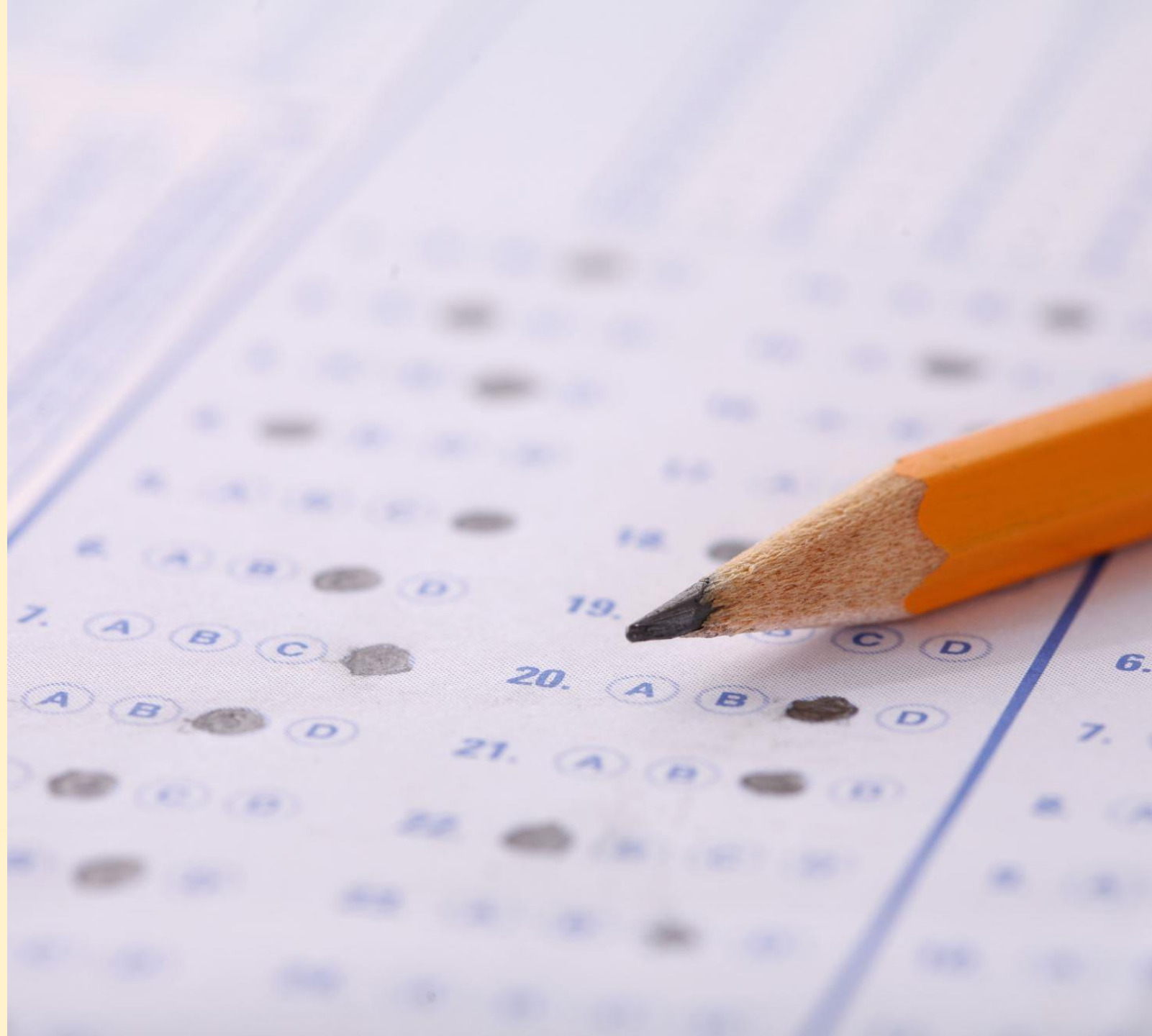
---

Diagnosis of medical need from a NHS medical professional.

**CANNOT** be a letter from the GP.



The evidence  
must be the  
ORIGINAL and  
NOT a COPY.



# GCSEs to A level

---

A fully completed Form 8 (Parts 1, 2 and 3), signed and dated, may roll forward from GCSE to GCE qualifications ...The SENCo **must** check that the candidate meets the current published criteria for 25% extra time, i.e. the 2023/24 JCQ regulations, before a new online application for 25% extra time is processed.





# Learning needs: Private Assessments

## Extra time, reader &/or scribe.

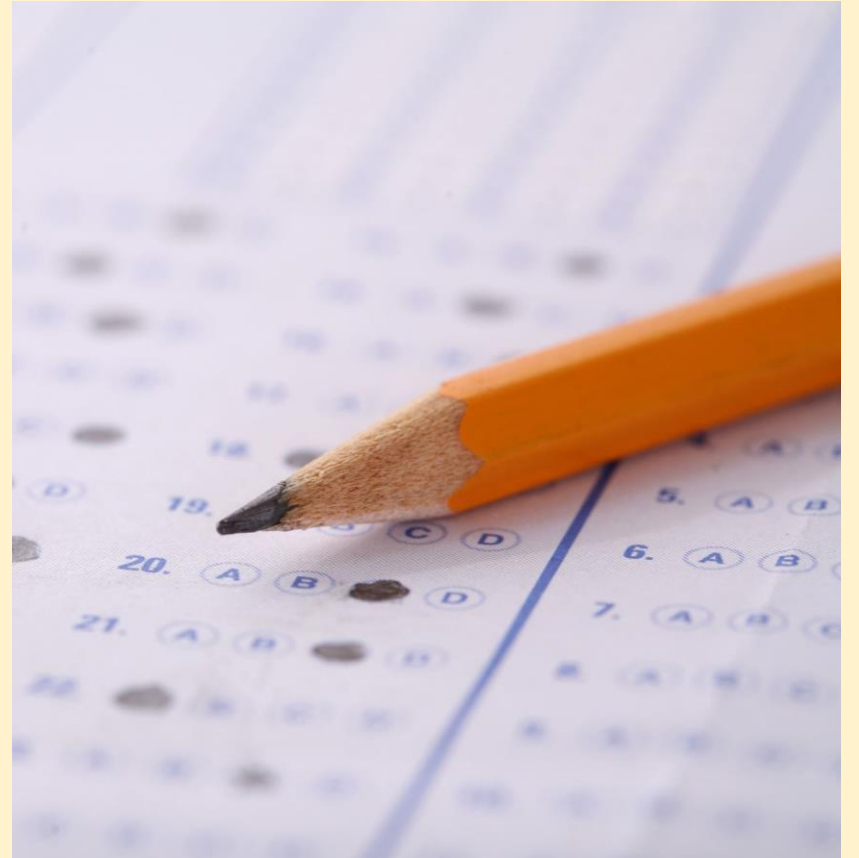
---


Any recommendations made following a private assessment in relation to exam access will be considered by the school, however, the assessment itself **cannot** be used to apply for any exams access arrangements.

This means that the school may decide to assess a student formally for these even if the assessor has already assessed her/him/they/them.

As the school use many of the same tests that are used by the assessor, it is recommended that no test should be repeated within a six-month period.

Of course, the school can trial any access arrangements recommended by the report in the interim.



A white computer keyboard is visible in the top left corner, partially obscured by a black stethoscope. The stethoscope is positioned diagonally across the frame, with its chest piece resting on the keyboard and its earpieces extending towards the bottom right. The background is a plain white surface.

# A word about anxiety...

---

Mental health is a serious issue and those suffering from a mental illness may require exam access.

Individuals that have been **diagnosed** by a **mental health professional** and **undergoing treatment** may require additional support when taking exams.

Medical evidence **must** be from an NHS mental health professional.

Not a GP

School are **NOT** obliged to accept evidence from a private assessment.